

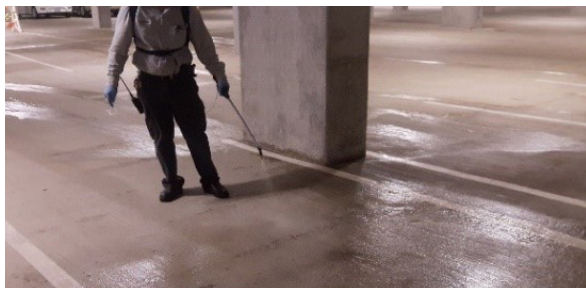


Accelerating Agent

Get the Maximum Waterproofing & Decrease Application Time

TechCrete® Accelerating Agent is an acetic-based solution, designed to be used as part of the **TechCrete 2500 Waterproofing System** in order to decrease the time between application and use. TechCrete Accelerating Agent expedites and enhances the sealing and waterproofing of cracks in the concrete. It increases the calcium content of the concrete, maintaining surface hardness!

Integrate the **TechCrete Waterproofing System** and our complete line of **ACR Surface Preparation Products**, along with the *Certified Applicator Program* to achieve a qualified system warranty!



TechCrete® Accelerating Agent

- Helps seal cracks up to 5/64" (2 mm).
- Long-term performance with no re-application needed.
- Increases calcium content of concrete.
- Maintains surface hardness.
- Non-toxic & biodegradable.

For Use On:

- Rooftop and Podium Decks
- Wharf Decks & Marine Structures
- Airport Runways, Taxiways & Aprons
- Parking Decks
- Precast Elements & Panels
- Tiled Showers



The following warranties require the use of **TechCrete Accelerating Agent** and are only available when the full system is applied by a TechCrete Certified Applicator;

New Construction: **TechCrete DIAMOND**
30-Year Limited Liability Material & Labor Warranty.

New & Existing Construction: **TechCrete EMERALD**
15-Year Limited Liability Material & Labor Warranty.



A Division of MBC North America, Inc. | 8590 Sanford Drive, Henrico, VA 23228
www.alchemco.com www.techcretesystem.com | 800-610-2895